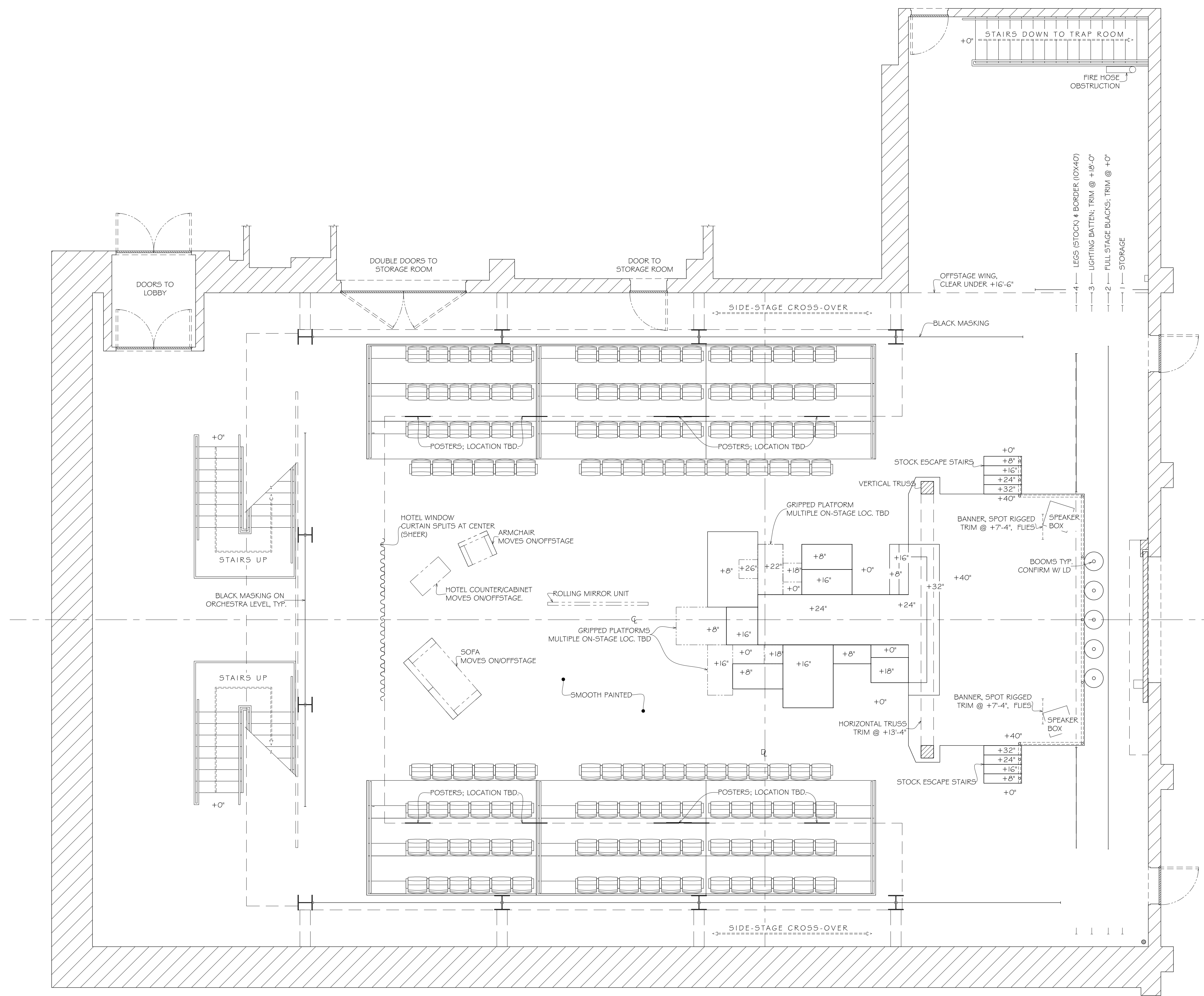




TIGER BEAT

- NOTES:
1. DASHED PLATFORMS ARE ON CASTERS AND BRAKES, ALTERNATE LOCATIONS TBD.
 2. LINESET 4 IS DOUBLEHUNG WITH LEGS AND BORDERS.
 3. BANNERS ARE 2'X6', SPOT RIGGED, AND TRIMMED AT +7'-4"; FLIES IN & OUT.
 4. BOOMS BEHIND STAGE PLATFORM, CONFIRM WITH LD.
 5. POSTERS ATTACHE TO BALCONY RAILING FRONTS; EXACT PLACEMENT TBD.



ALL MATERIALS, CONSTRUCTION AND FINISHES MUST COMPLY WITH THE MOST STRINGENT APPLICABLE FEDERAL AND LOCAL SAFETY CODES.

THIS DRAWING AND ALL THE IDEAS, ARRANGEMENTS, DESIGNS AND PLANS CONTAINED HEREIN OR REPRESENTED THEREBY ARE OWNED AND REMAIN THE PROPERTY OF THE DESIGNER, AND HAVE BEEN CREATED AND DEVELOPED FOR USE ON, AND IN CONNECTION WITH, THE PROJECT SPECIFIED. NEITHER THIS DRAWING NOR ANY OF SUCH IDEAS, ARRANGEMENTS, DESIGNS OR PLANS SHALL BE REPRODUCED BY OR DISCLOSED TO ANY PERSON, FIRM OR CORPORATION FOR ANY USE WHATSOEVER, EXCEPT BY SPECIFIC AND WRITTEN PERMISSION OF THE DESIGNER.

WRITTEN DIMENSIONS ON DRAWINGS SHALL HAVE AUTHORITY OVER SCALED CONSTRUCTION AND MANUFACTURERS SHALL VERIFY AND BE RESPONSIBLE FOR ALL DIMENSIONS AND CONDITIONS ON THE JOB, AND SHALL INFORM THE DESIGNER OF ALL VARIATIONS FROM DRAWINGS PRIOR TO PERFORMING THE WORK. THE DESIGNER SHALL FIRST SEE AND APPROVE CONTRACTOR'S FULL-SIZE DETAILS BEFORE ANY FABRICATION BEGINS.

THESE DRAWINGS REPRESENT VISUAL CONCEPTS AND CONSTRUCTION SUGGESTIONS ONLY. THE DESIGNER AND HIS/HER EMPLOYEES AND ASSISTANTS ARE NOT QUALIFIED TO DETERMINE THE STRUCTURAL APPROPRIATENESS OF THESE DECISIONS, AND WILL NOT ASSUME RESPONSIBILITY FOR IMPROPER ENGINEERING, CONSTRUCTION AND/OR HANDLING OF THE SCENERY REPRESENTED HEREIN.

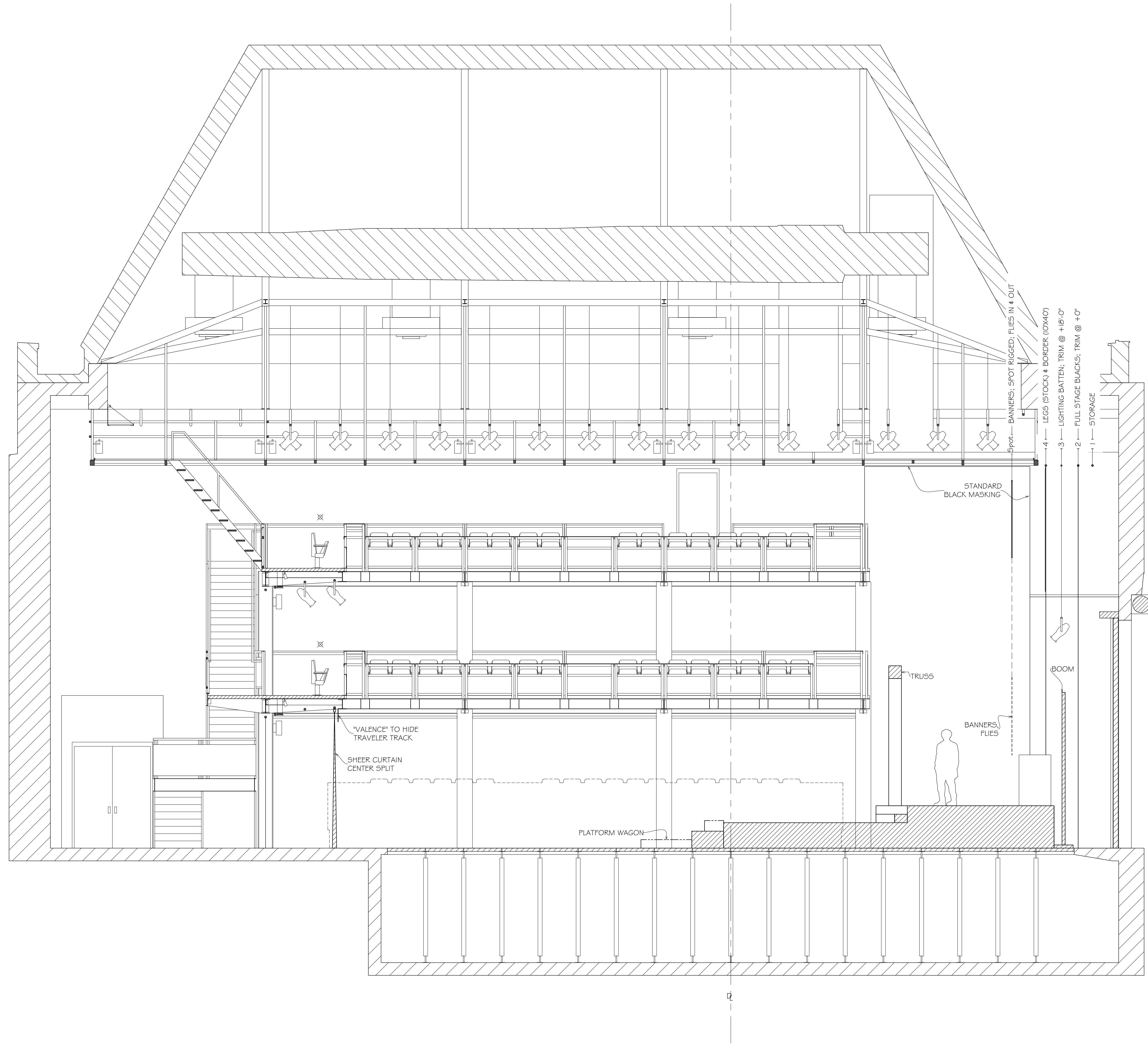
SCALE:	1/4" = 1'-0"
DRWG:	RACHEL ROSE BURKE
DATE:	12/20/19
REVISION(S):	

DRAWING TITLE
GROUND PLAN

SHEET NO.
1

TIGER BEAT

NOTES:
 1. BANNERS ARE SPOT RIGGED; FLY IN
 & OUT



ALL MATERIALS, CONSTRUCTION AND FINISHES MUST COMPLY WITH THE MOST STRINGENT APPLICABLE FEDERAL AND LOCAL SAFETY CODES.
 THIS DRAWING AND ALL THE IDEAS, ARRANGEMENTS, DESIGNS AND PLANS CONTAINED HEREIN OR REPRESENTED THEREBY ARE OWNED AND REMAIN THE PROPERTY OF THE DESIGNER, AND HAVE BEEN CREATED AND DEVELOPED FOR USE ON, AND IN CONNECTION WITH, THE PROJECT SPECIFIED. NEITHER THIS DRAWING NOR ANY OF SUCH IDEAS, ARRANGEMENTS, DESIGNS OR PLANS SHALL BE APPROPRIATED BY OR DISCLOSED TO ANY PERSON, FIRM OR CORPORATION FOR ANY USE WHATSOEVER, EXCEPT BY SPECIFIC AND WRITTEN PERMISSION OF THE DESIGNER.
 WRITTEN DIMENSIONS ON DRAWINGS SHALL HAVE AUTHORITY OVER SCALED. CONTRACTORS AND MANUFACTURERS SHALL VERIFY AND BE RESPONSIBLE FOR ALL DIMENSIONS AND CONDITIONS ON THE JOB, AND SHALL INFORM THE DESIGNER OF ALL VARIATIONS FROM DRAWINGS PRIOR TO PERFORMING THE WORK. THE DESIGNER SHALL FIRST SEE AND APPROVE CONTRACTOR'S FULL-SIZE DETAILS BEFORE ANY FABRICATION IS BEGUN.
 THESE DRAWINGS REPRESENT VISUAL CONCEPTS AND CONSTRUCTION SUGGESTIONS ONLY. THE DESIGNER AND HIS/HER EMPLOYEES AND ASSISTANTS ARE NOT QUALIFIED TO DETERMINE THE STRUCTURAL APPROPRIATENESS OF THESE DESIGNS, AND WILL NOT ASSUME RESPONSIBILITY FOR IMPROPER ENGINEERING, CONSTRUCTION AND/OR HANDLING OF THE SCENERY REPRESENTED HEREIN.

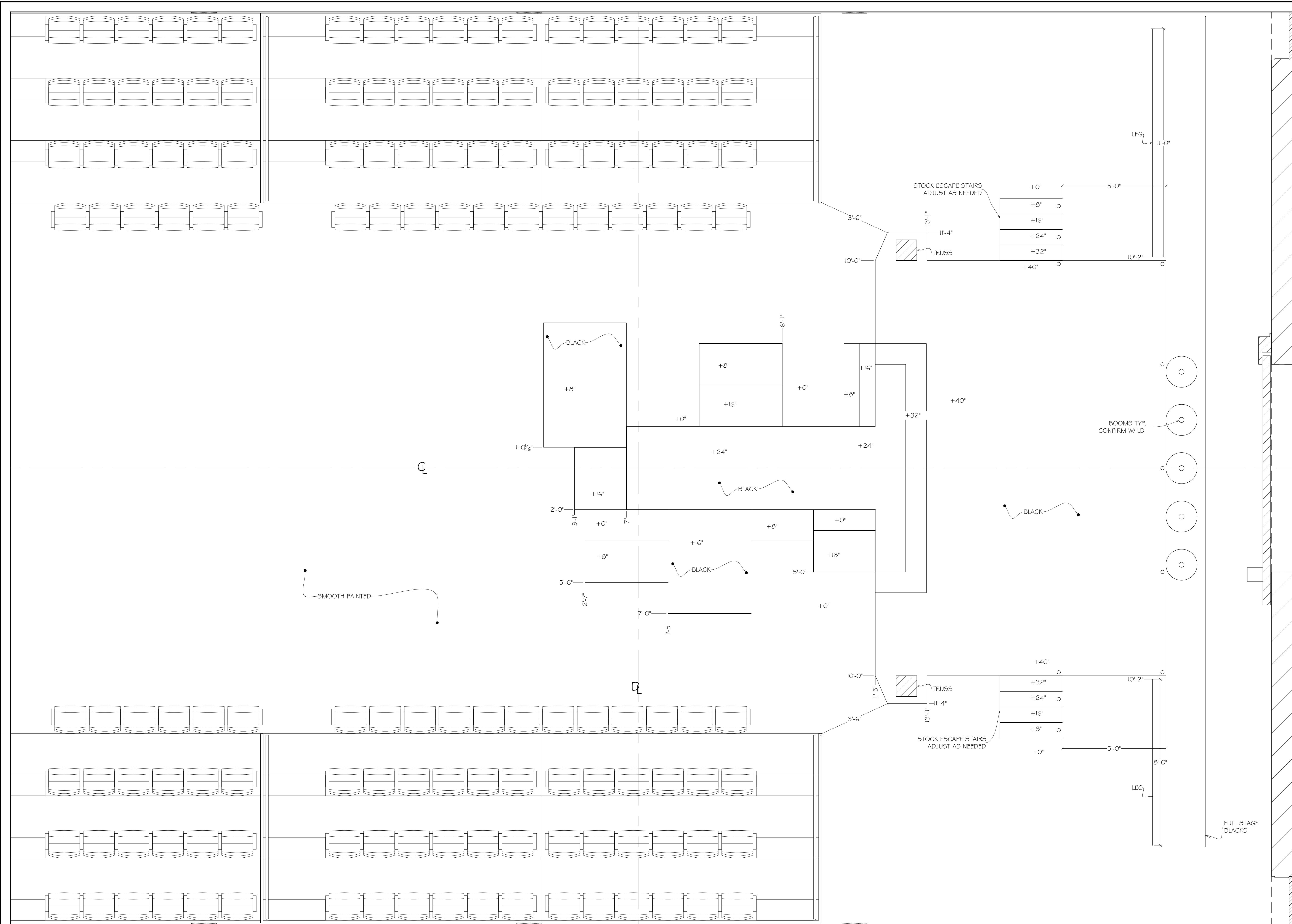
SCALE:	1/4" = 1'-0"
DRWG:	RACHEL ROSE BURKE
DATE:	12/20/19
REVISION(S):	

DRAWING TITLE
**S.R. CENTERLINE
SECTION**

SHEET NO.

TIGER BEAT

NOTES:
 I. ADJUST EXCAPE STAIRS AS NEEDED



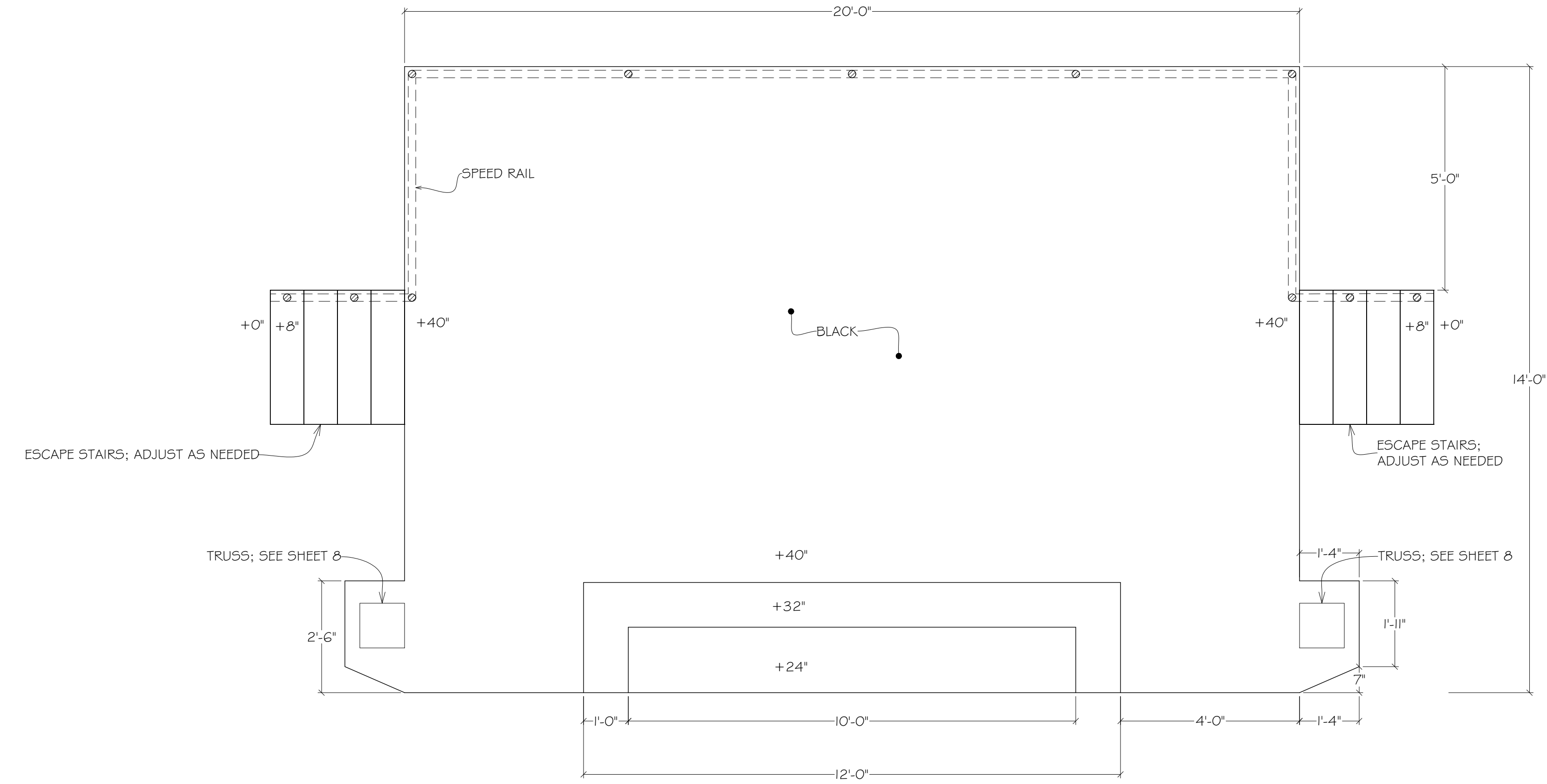
ALL MATERIALS, CONSTRUCTION AND FINISHES MUST COMPLY WITH THE MOST STRINGENT APPLICABLE FEDERAL AND LOCAL SAFETY CODES.
 THIS DRAWING AND ALL THE IDEAS, ARRANGEMENTS, DESIGNS AND PLANS CONTAINED HEREIN OR REPRESENTED THEREBY ARE OWNED AND REMAIN THE PROPERTY OF THE DESIGNER, AND HAVE BEEN CREATED AND DEVELOPED FOR USE ON, AND IN CONNECTION WITH, THE PROJECT SPECIFIED. NEITHER THIS DRAWING, NOR ANY OF SUCH IDEAS, ARRANGEMENTS, DESIGNS OR PLANS SHALL BE APPROPRIATED BY OR DISCLOSED TO ANY PERSON, FIRM OR CORPORATION FOR ANY USE WHATSOEVER, EXCEPT BY SPECIFIC AND WRITTEN PERMISSION OF THE DESIGNER.
 WRITTEN DIMENSIONS ON DRAWINGS SHALL HAVE AUTHORITY OVER SCALED CONSTRUCTORS AND MANUFACTURERS SHALL VERIFY AND BE RESPONSIBLE FOR ALL DIMENSIONS AND CONDITIONS ON THE JOB, AND SHALL INFORM THE DESIGNER OF ALL VARIATIONS FROM DRAWINGS PRIOR TO PERFORMING THE WORK. THE DESIGNER SHALL FIRST SEE AND APPROVE CONTRACTORS FULL-SIZE DETAILS BEFORE ANY FABRICATION IS BEGUN.
 THESE DRAWINGS REPRESENT VISUAL CONCEPTS AND CONSTRUCTION SUGGESTIONS ONLY. THE DESIGNER AND HIS/HER EMPLOYEES AND ASSISTANTS ARE NOT QUALIFIED TO DETERMINE THE STRUCTURAL APPROPRIATENESS OF THESE DECISIONS, AND WILL NOT ASSUME RESPONSIBILITY FOR IMPROPER ENGINEERING, CONSTRUCTION AND/OR HANDLING OF THE SCENERY REPRESENTED HEREIN.

SCALE: 1/2" = 1'-0"
 DRWG: RACHEL ROSE BURKE
 DATE: 12/20/19
 REVISION(S):

DRAWING TITLE
DECK LAYOUT

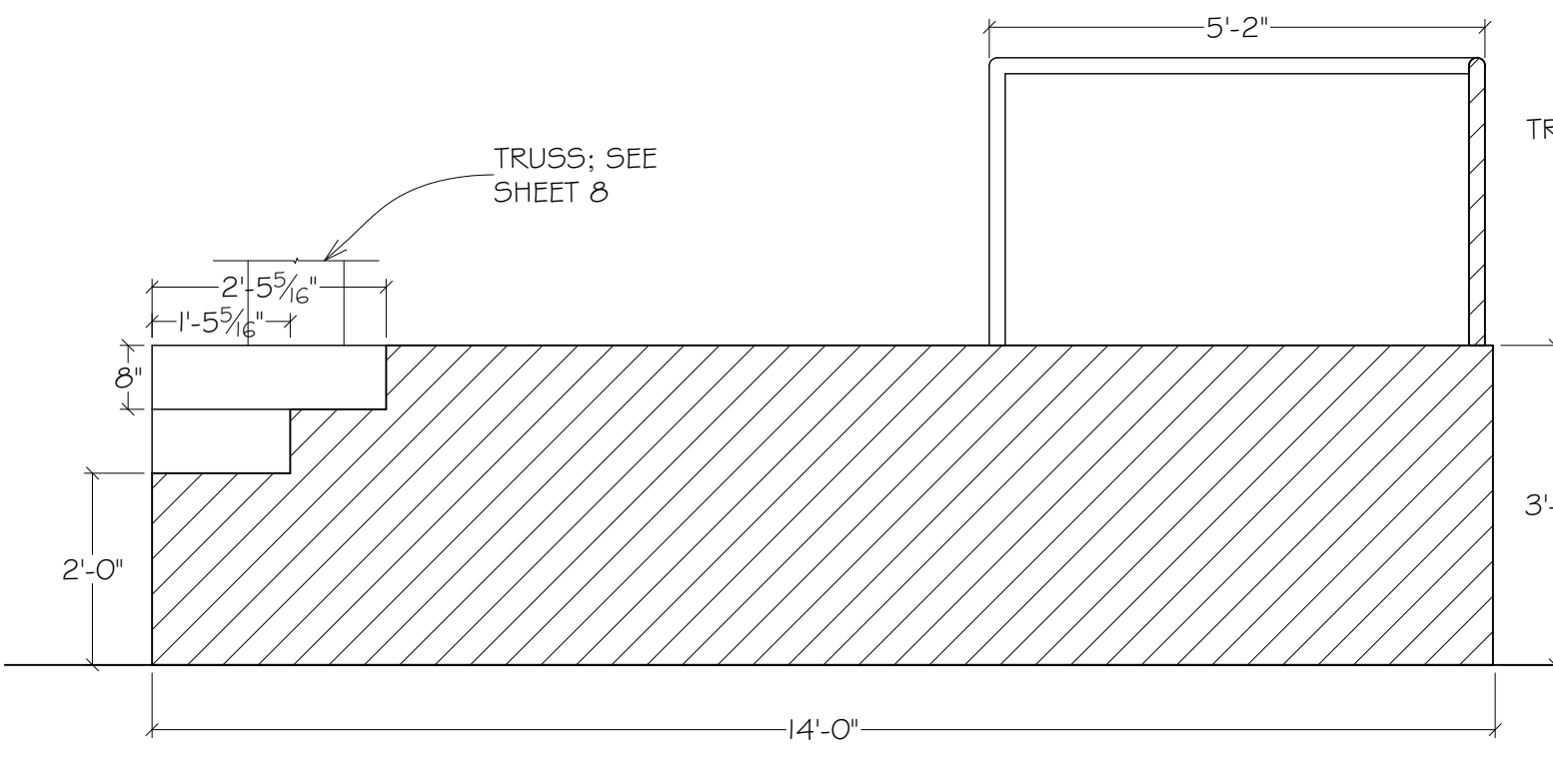
SHEET NO.
3

**TIGER
BEAT**

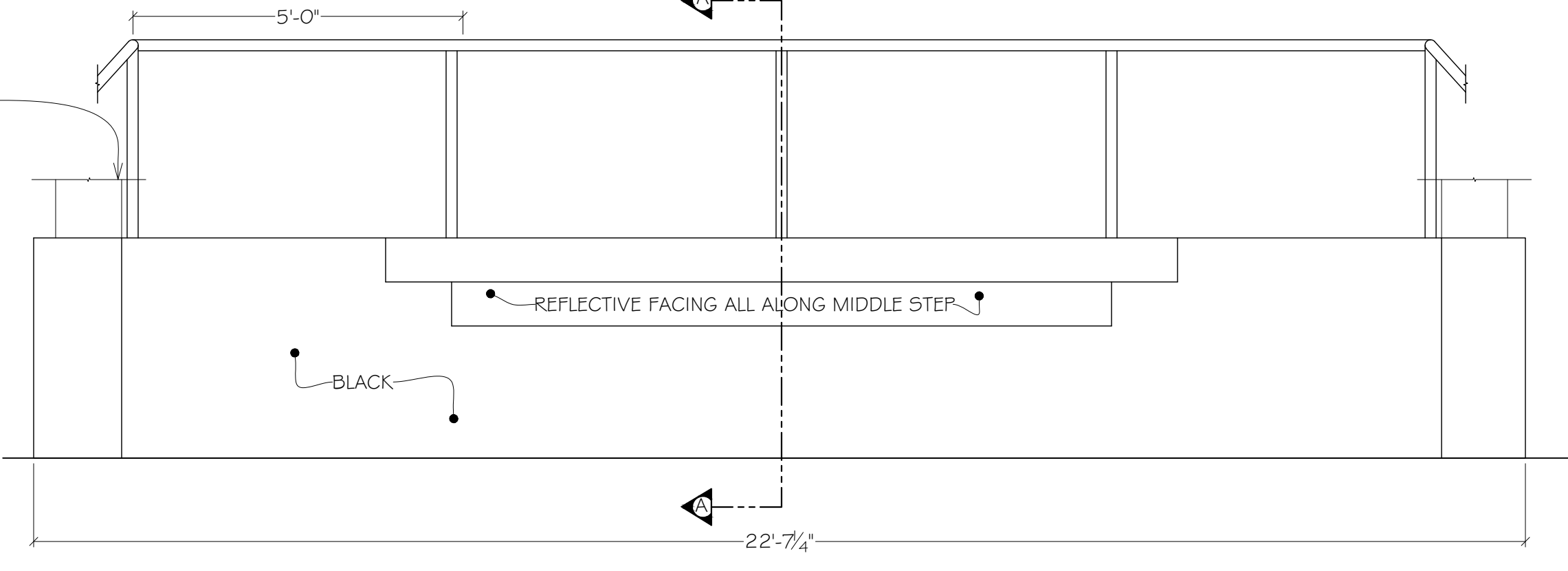


All other facing is 1/4" MDF

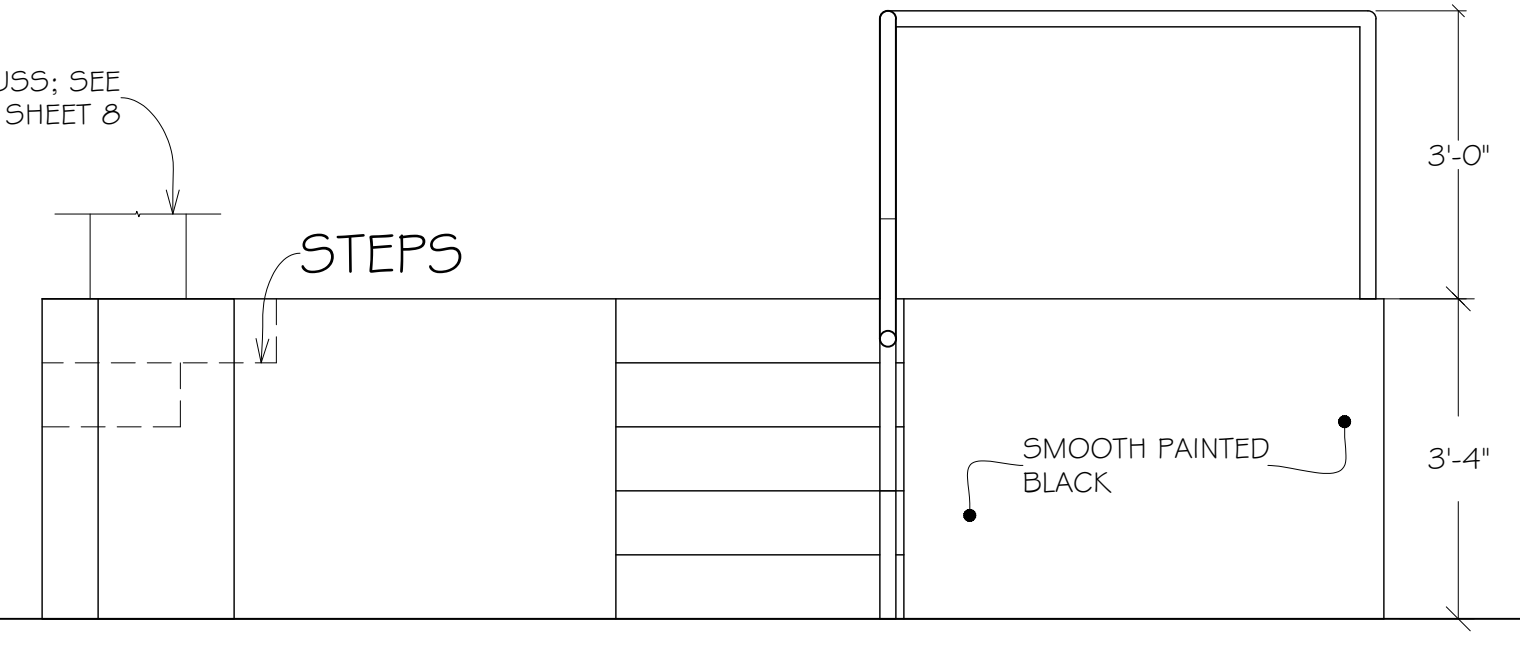
TOP VIEW
STAGE PLATFORM



SECTION A-A
STAGE PLATFORM



FRONT VIEW
STAGE PLATFORM



SIDE VIEW
STAGE PLATFORM

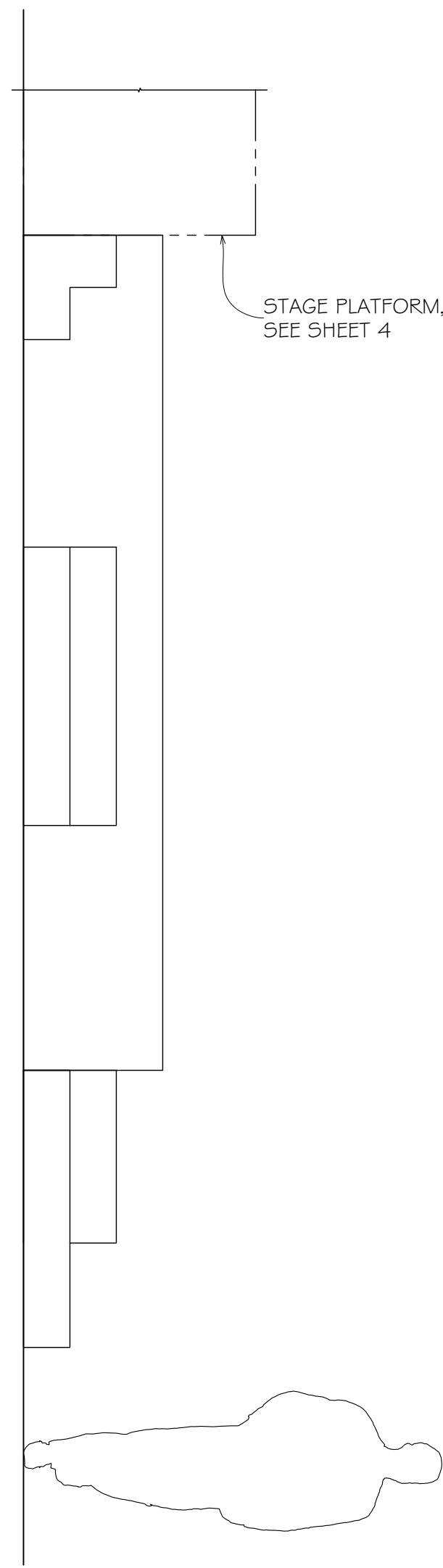
ALL MATERIALS, CONSTRUCTION AND FINISHES MUST COMPLY WITH THE MOST STRINGENT APPLICABLE FEDERAL AND LOCAL SAFETY CODES.
 THIS DRAWING AND ALL THE IDEAS, ARRANGEMENTS, DESIGNS AND PLANS CONTAINED HEREIN OR REPRESENTED THEREBY ARE OWNED AND REMAIN THE PROPERTY OF THE DESIGNER, AND HAVE BEEN CREATED AND DEVELOPED FOR USE ON, AND IN CONNECTION WITH, THE PROJECT SPECIFIED. NEITHER THIS DRAWING NOR ANY OF SUCH IDEAS, ARRANGEMENTS, DESIGNS OR PLANS SHALL BE APPROPRIATED BY OR DISCLOSED TO ANY PERSON, FIRM OR CORPORATION FOR ANY USE WHATSOEVER, EXCEPT BY SPECIFIC AND WRITTEN PERMISSION OF THE DESIGNER.
 WRITTEN DIMENSIONS ON DRAWINGS SHALL HAVE AUTHORITY OVER SCALED. CONTRACTORS AND MANUFACTURERS SHALL VERIFY AND BE RESPONSIBLE FOR ALL DIMENSIONS AND CONDITIONS ON THE JOB, AND SHALL INFORM THE DESIGNER OF ALL VARIATIONS FROM DRAWINGS PRIOR TO PERFORMING THE WORK. THE DESIGNER SHALL FIRST SEE AND APPROVE CONTRACTOR'S FULL-SIZE DETAILS BEFORE ANY FABRICATION IS BEGUN.
 THESE DRAWINGS REPRESENT VISUAL CONCEPTS AND CONSTRUCTION SUGGESTIONS ONLY. THE DESIGNER AND HIS/HER EMPLOYEES AND ASSISTANTS ARE NOT QUALIFIED TO DETERMINE THE STRUCTURAL APPROPRIATENESS OF THESE SUGGESTIONS AND WILL NOT ASSUME RESPONSIBILITY FOR IMPROPER ENGINEERING, CONSTRUCTION AND/OR HANDLING OF THE SCENERY REPRESENTED HEREIN.

SCALE:	1/2" = 1'-0"
DRWG:	RACHEL ROSE BURKE
DATE:	12/20/19
REVISION(S):	

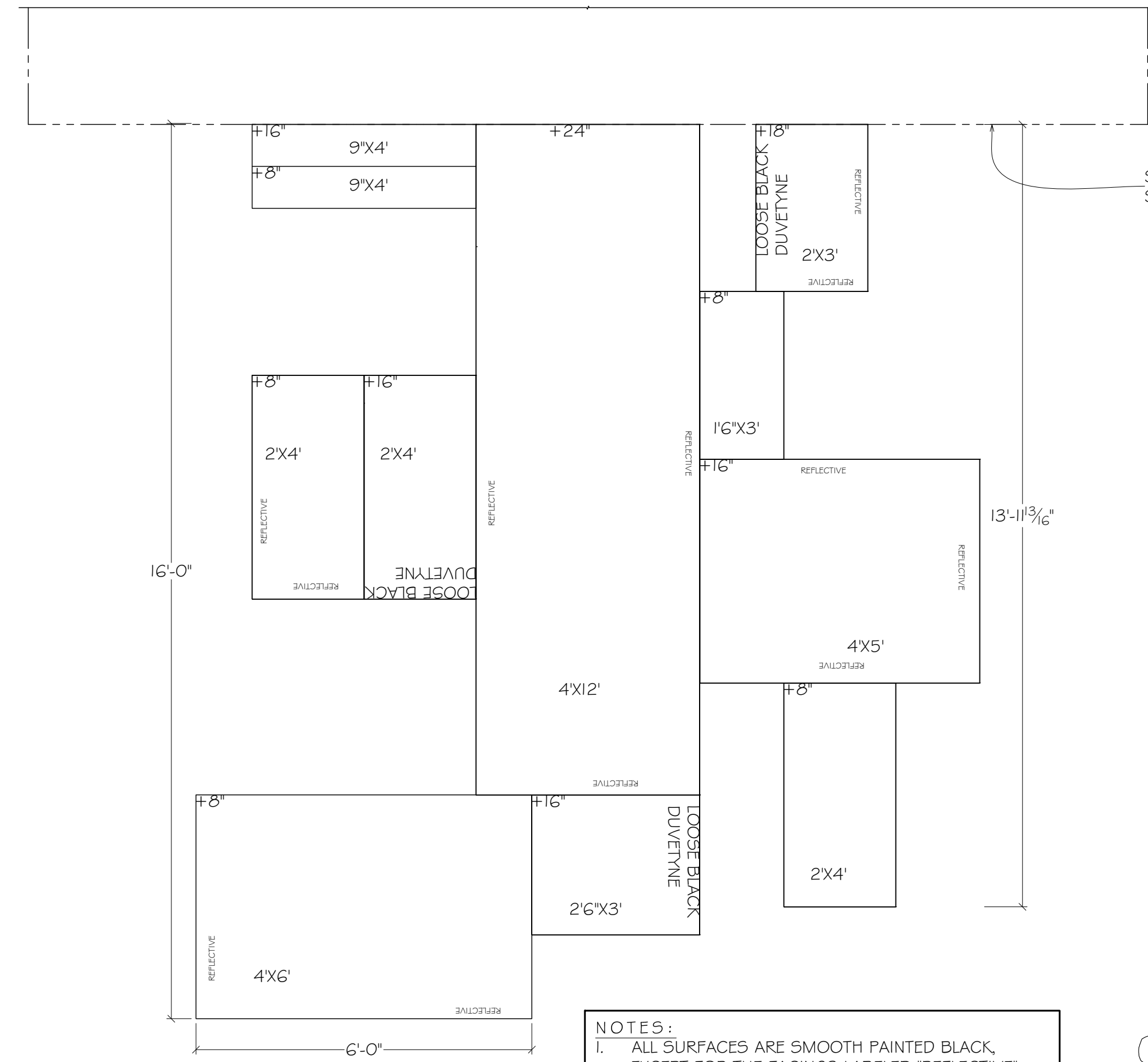
DRAWING TITLE
STAGE PLATFORM

SHEET NO.

TIGER
BEAT

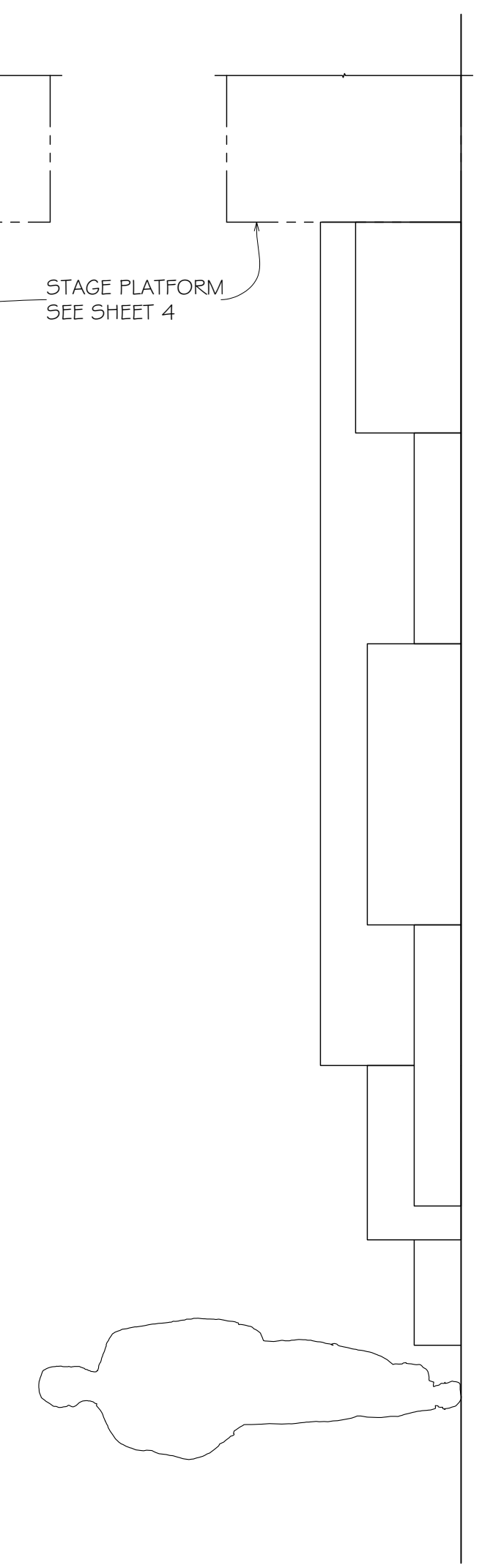


SR SIDE VIEW
RUNWAY PLATFORMS

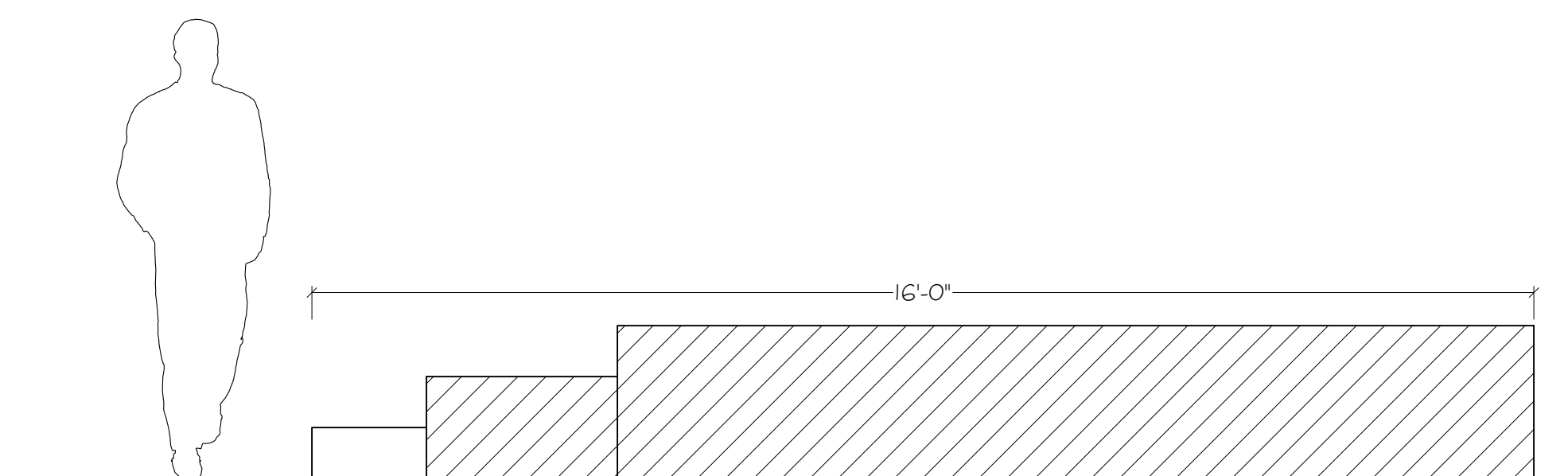


NOTES:
 1. ALL SURFACES ARE SMOOTH PAINTED BLACK, EXCEPT FOR THE FACINGS LABELED 'REFLECTIVE' OR 'LOOSE BLACK DUVELTYNE.'
 2. THE REFLECTIVE FACING WILL BE MYLAR OR 1/8" REFLECTIVE ACRYLIC SHEETING.

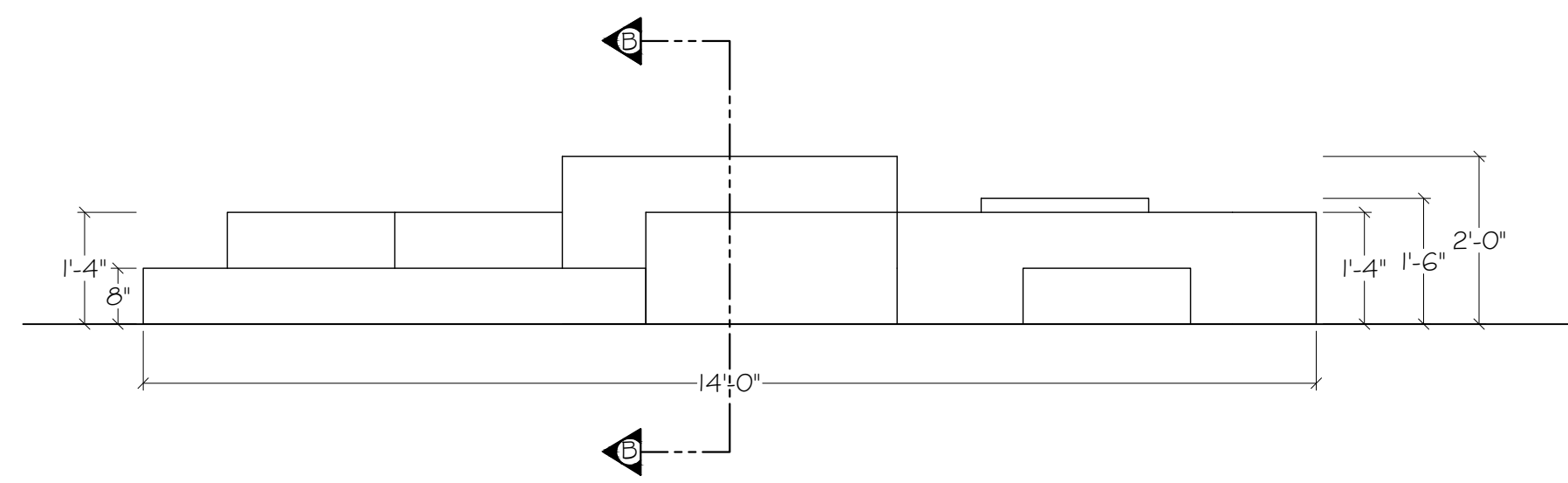
TOP VIEW
RUNWAY PLATFORMS



SL SIDE VIEW
RUNWAY PLATFORMS



SECTION B-B
RUNWAY PLATFORMS



FRONT VIEW
RUNWAY PLATFORMS

ALL MATERIALS, CONSTRUCTION AND FINISHES MUST COMPLY WITH THE MOST STRINGENT APPLICABLE FEDERAL AND LOCAL SAFETY CODES.
 THIS DRAWING AND ALL THE IDEAS, ARRANGEMENTS, DESIGNS AND PLANS CONTAINED HEREIN OR REPRESENTED THEREBY ARE OWNED AND REMAIN THE PROPERTY OF THE DESIGNER, AND HAVE BEEN CREATED AND DEVELOPED FOR USE ON, AND IN CONNECTION WITH, THE PROJECT SPECIFIED. NEITHER THIS DRAWING NOR ANY OF SUCH IDEAS, ARRANGEMENTS, DESIGNS OR PLANS SHALL BE APPROPRIATED BY OR DISCLOSED TO ANY PERSON, FIRM OR CORPORATION FOR ANY USE WHATSOEVER, EXCEPT BY SPECIFIC AND WRITTEN PERMISSION OF THE DESIGNER.
 WRITTEN DIMENSIONS ON DRAWINGS SHALL HAVE AUTHORITY OVER SCALED CONSTRUCTORS AND MANUFACTURERS SHALL VERIFY AND BE RESPONSIBLE FOR ALL DIMENSIONS AND CONDITIONS ON THE JOB, AND SHALL INFORM THE DESIGNER OF ALL VARIATIONS FROM DRAWINGS PRIOR TO PERFORMING THE WORK. THE DESIGNER SHALL FIRST SEE AND APPROVE CONTRACTOR'S FULL-SIZE DETAILS BEFORE ANY FABRICATION IS BEGUN.
 THESE DRAWINGS REPRESENT VISUAL CONCEPTS AND CONSTRUCTION SUGGESTIONS ONLY. THE DESIGNER AND HIS/HER EMPLOYEES AND ASSISTANTS ARE NOT QUALIFIED TO DETERMINE THE STRUCTURAL APPROPRIATENESS OF THESE SUGGESTIONS AND WILL NOT ASSUME RESPONSIBILITY FOR IMPROPER ENGINEERING, CONSTRUCTION AND/OR HANDLING OF THE SCENERY REPRESENTED HEREIN.

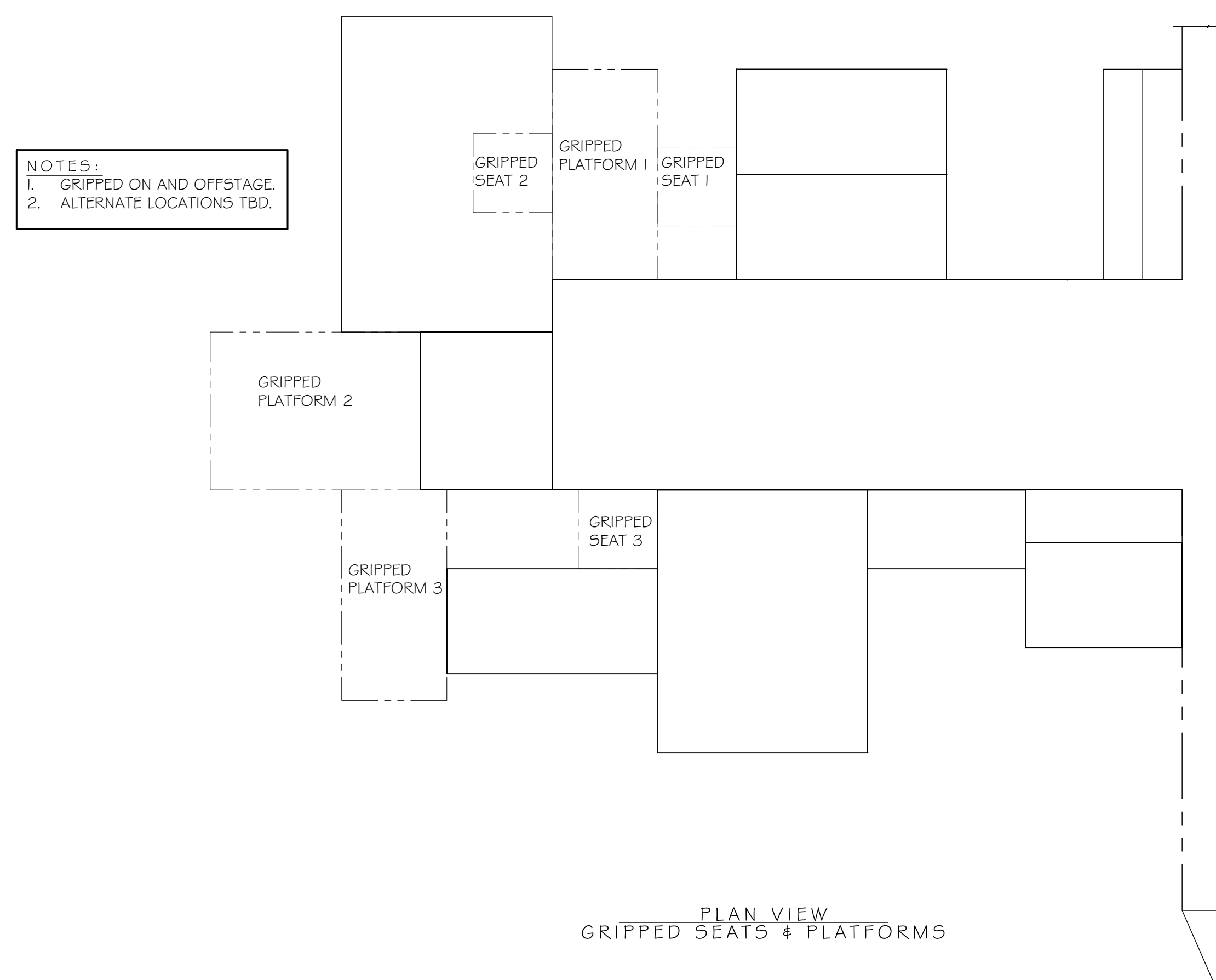
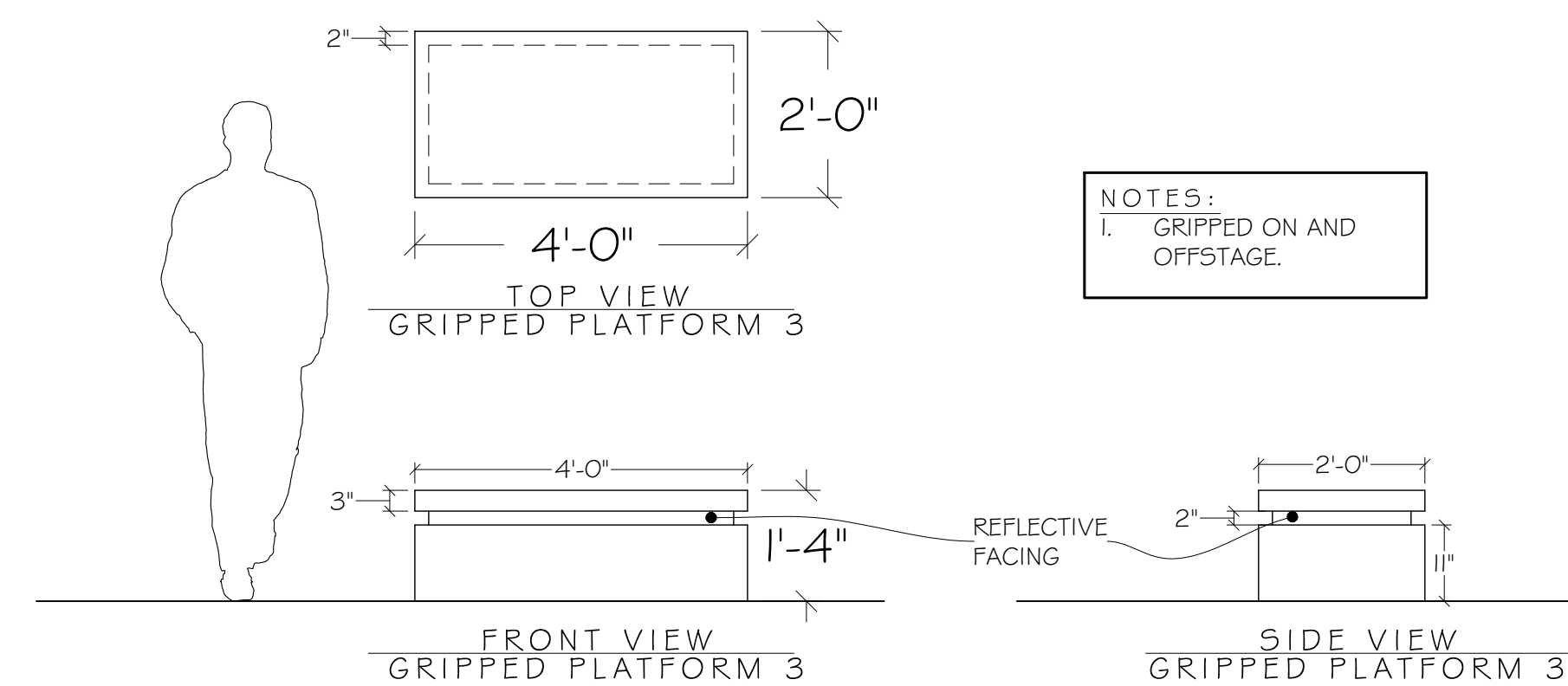
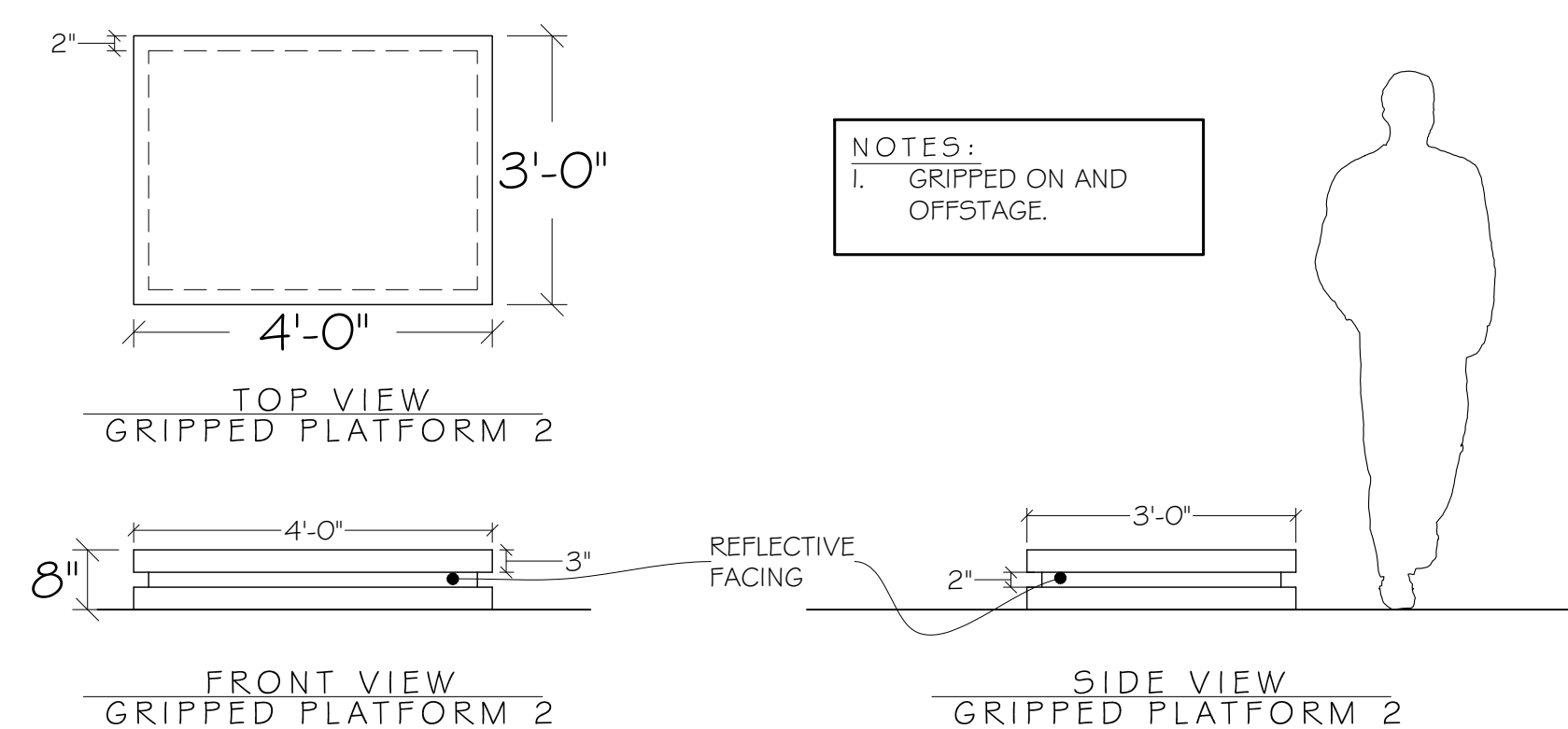
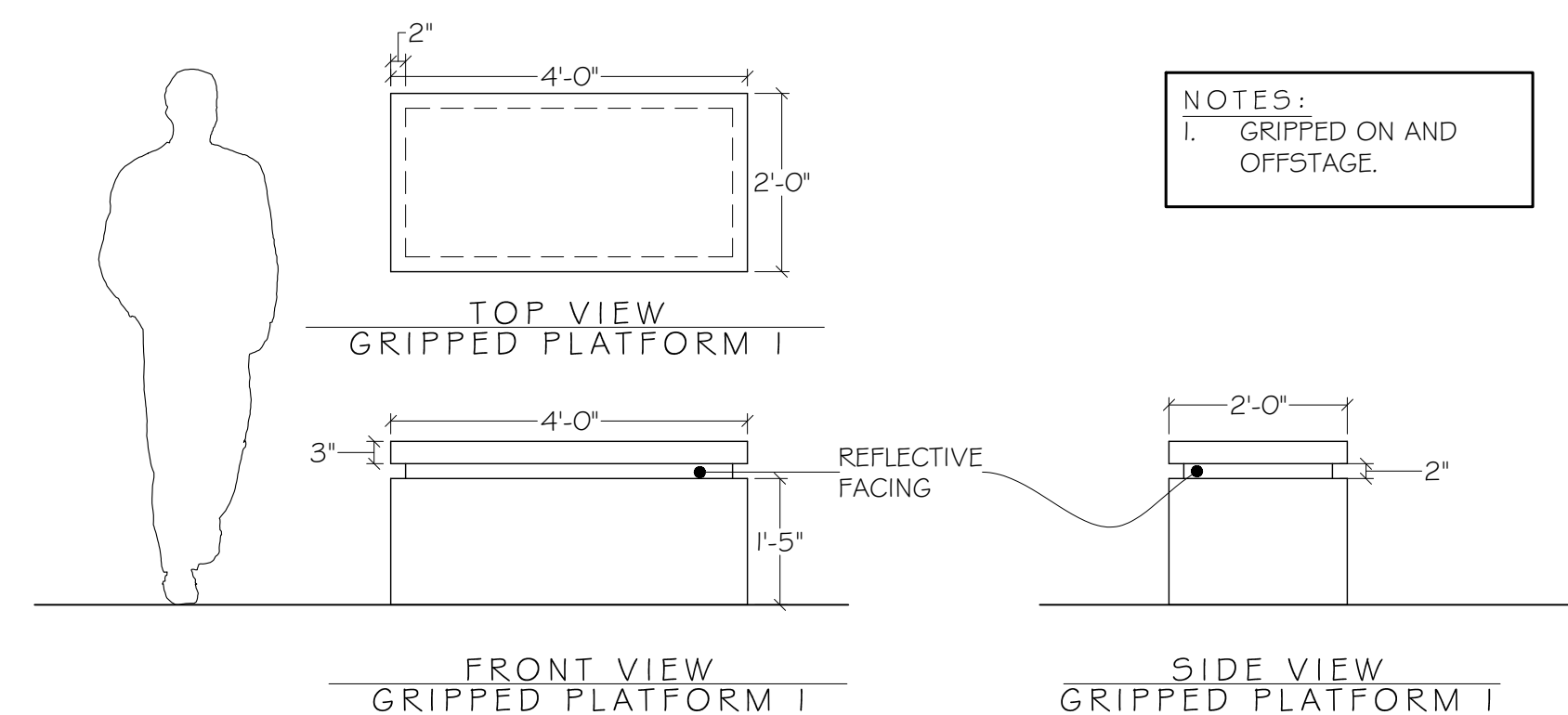
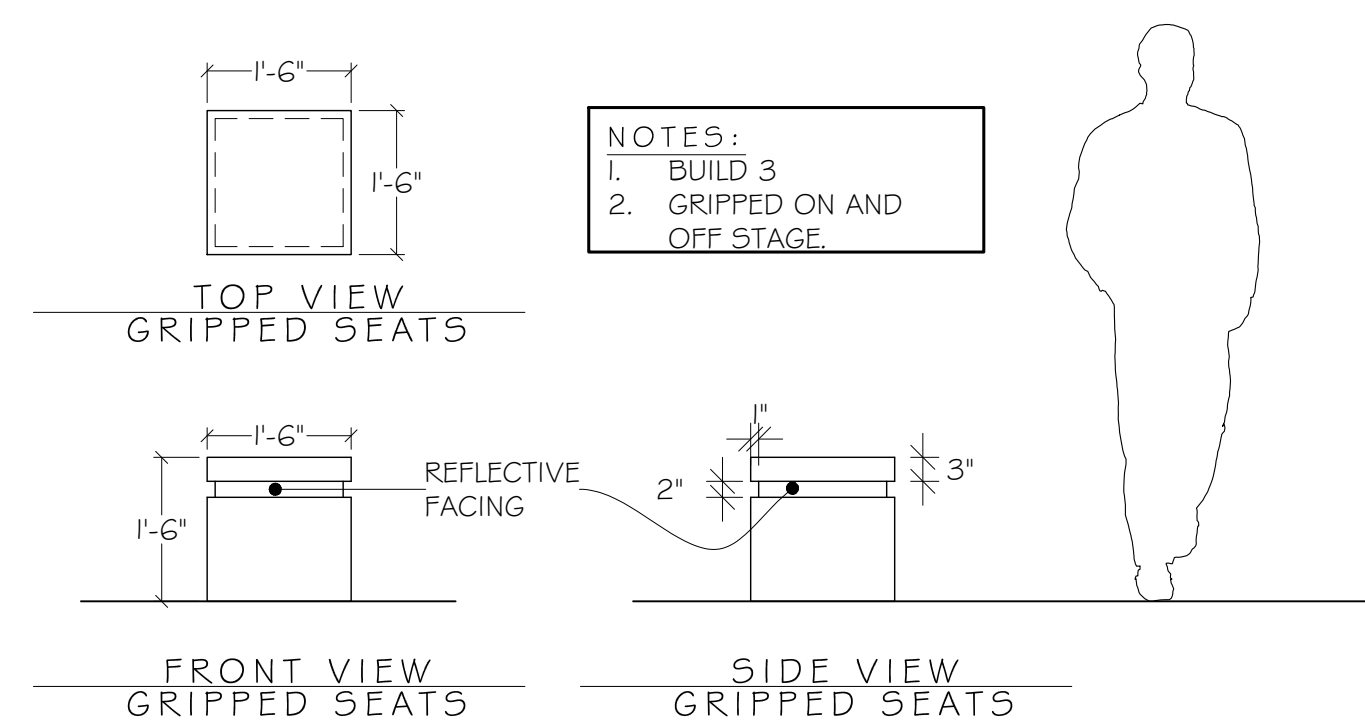
SCALE:	1/2" = 1'-0"
DRWG:	RACHEL ROSE BURKE
DATE:	12/20/19
REVISION(S):	

DRAWING TITLE
RUNWAY PLATFORMS

SHEET NO.
5



TIGER
BEAT



ALL MATERIALS, CONSTRUCTION AND FINISHES MUST COMPLY WITH THE MOST STRINGENT APPLICABLE FEDERAL AND LOCAL SAFETY CODES.

THIS DRAWING AND ALL THE IDEAS, ARRANGEMENTS, DESIGNS AND PLANS CONTAINED HEREIN OR REPRESENTED THEREBY ARE OWNED AND REMAIN THE PROPERTY OF THE DESIGNER, AND HAVE BEEN CREATED AND DEVELOPED FOR USE ON, AND IN CONNECTION WITH, THE PROJECT SPECIFIED. NEITHER THIS DRAWING NOR ANY OF SUCH IDEAS, ARRANGEMENTS, DESIGNS OR PLANS SHALL BE APPROPRIATED BY OR DISCLOSED TO ANY PERSON, FIRM OR CORPORATION FOR ANY USE WHATSOEVER, EXCEPT BY SPECIFIC AND WRITTEN PERMISSION OF THE DESIGNER.

WRITTEN DIMENSIONS ON DRAWINGS SHALL HAVE AUTHORITY OVER SCALED DIMENSIONS. CONTRACTORS AND MANUFACTURERS SHALL VERIFY AND BE RESPONSIBLE FOR ALL DIMENSIONS AND CONDITIONS ON THE JOB, AND SHALL INFORM THE DESIGNER OF ALL VARIATIONS FROM DRAWINGS PRIOR TO PERFORMING THE WORK. THE DESIGNER SHALL FIRST SEE AND APPROVE CONTRACTOR'S FULL-SIZE DETAILS BEFORE ANY FABRICATION BEGINS.

THESE DRAWINGS REPRESENT VISUAL CONCEPTS AND CONSTRUCTION SUGGESTIONS ONLY. THE DESIGNER AND HIS/HER EMPLOYEES AND ASSISTANTS ARE NOT QUALIFIED TO DETERMINE THE STRUCTURAL APPROPRIATENESS OF THESE DECISIONS, AND WILL NOT ASSUME RESPONSIBILITY FOR IMPROPER ENGINEERING, CONSTRUCTION AND/OR HANDLING OF THE SCENERY REPRESENTED HEREIN.

SCALE: 1/2" = 1'-0"
DRWG: RACHEL ROSE BURKE
DATE: 12/20/19
REVISION(S):

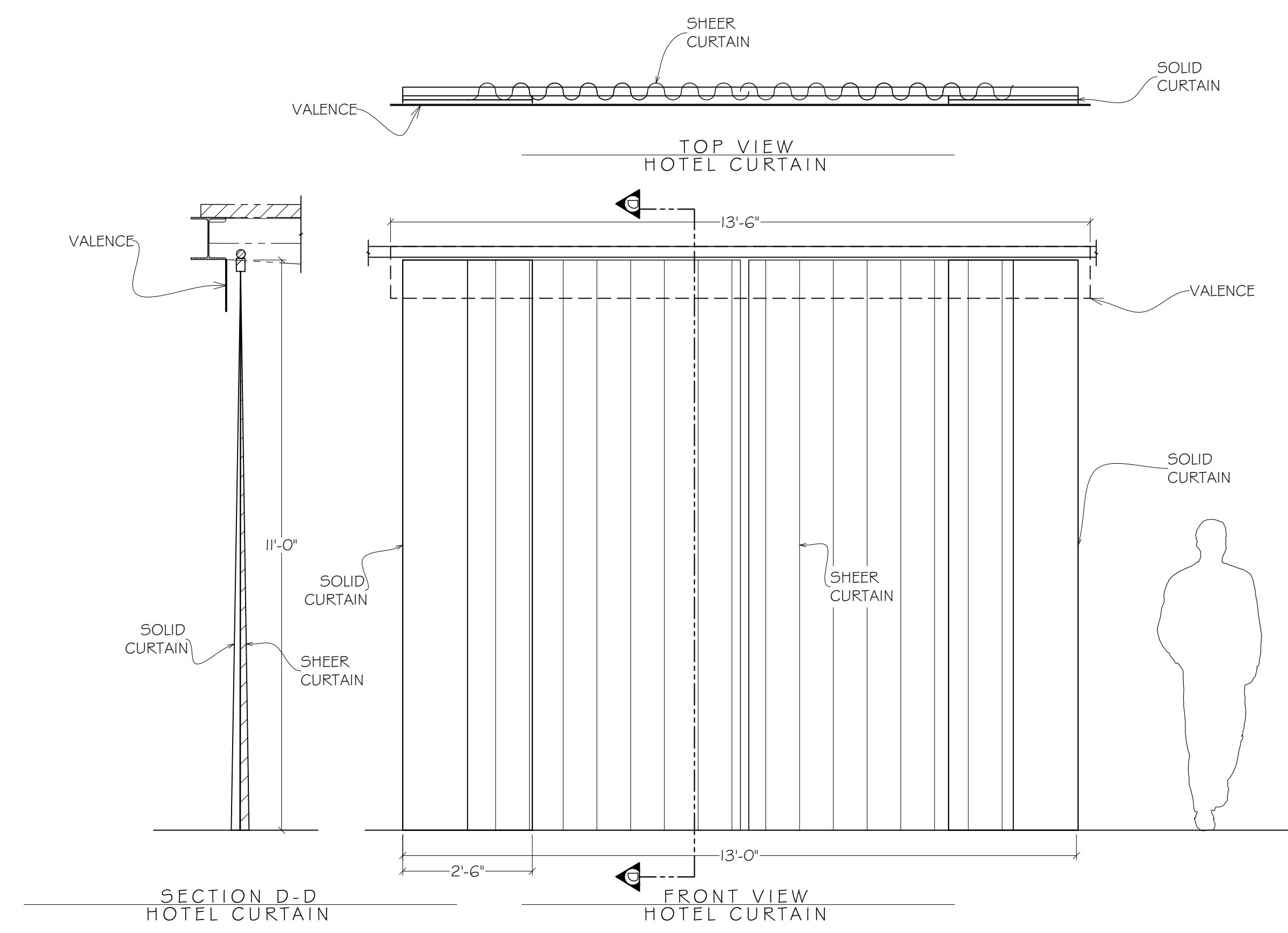
DRAWING TITLE

GRIPPING SEATS & PLATFORMS

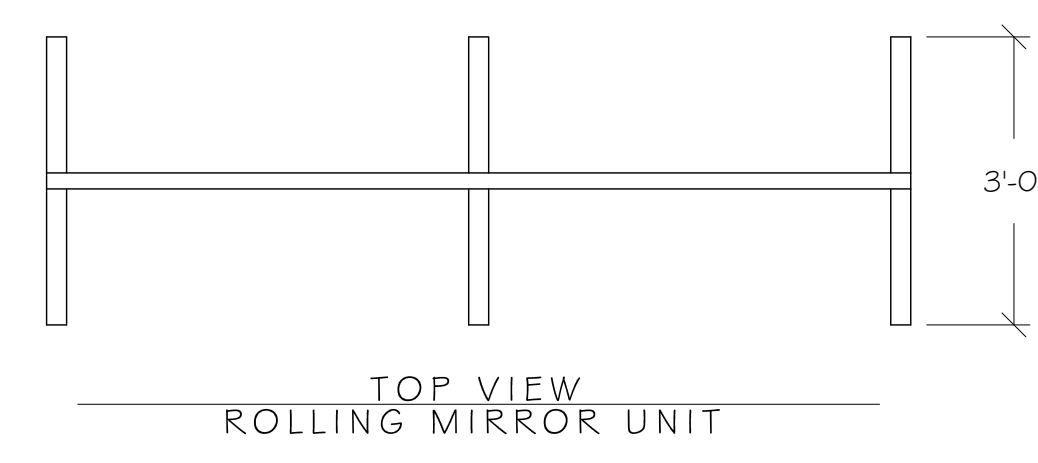
SHEET NO.

6

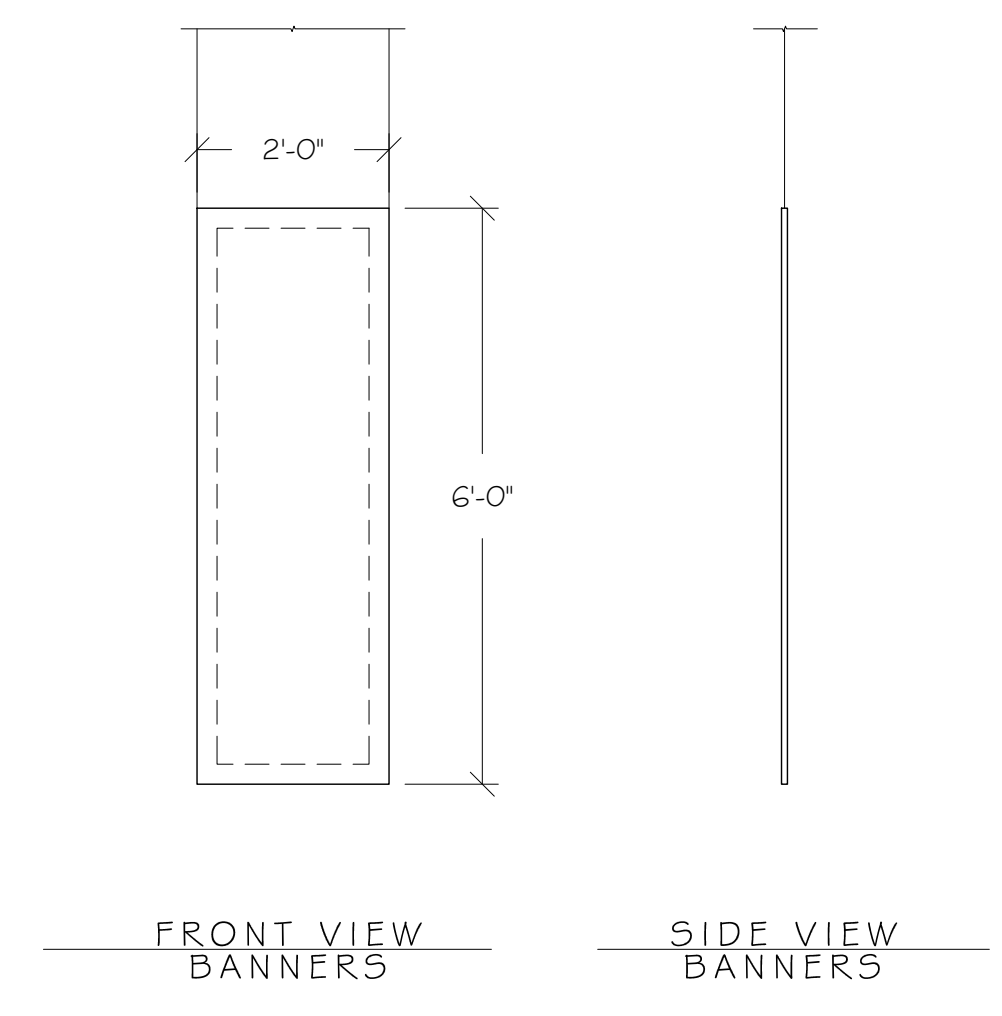
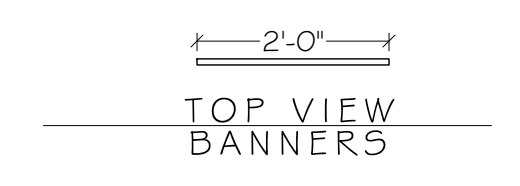
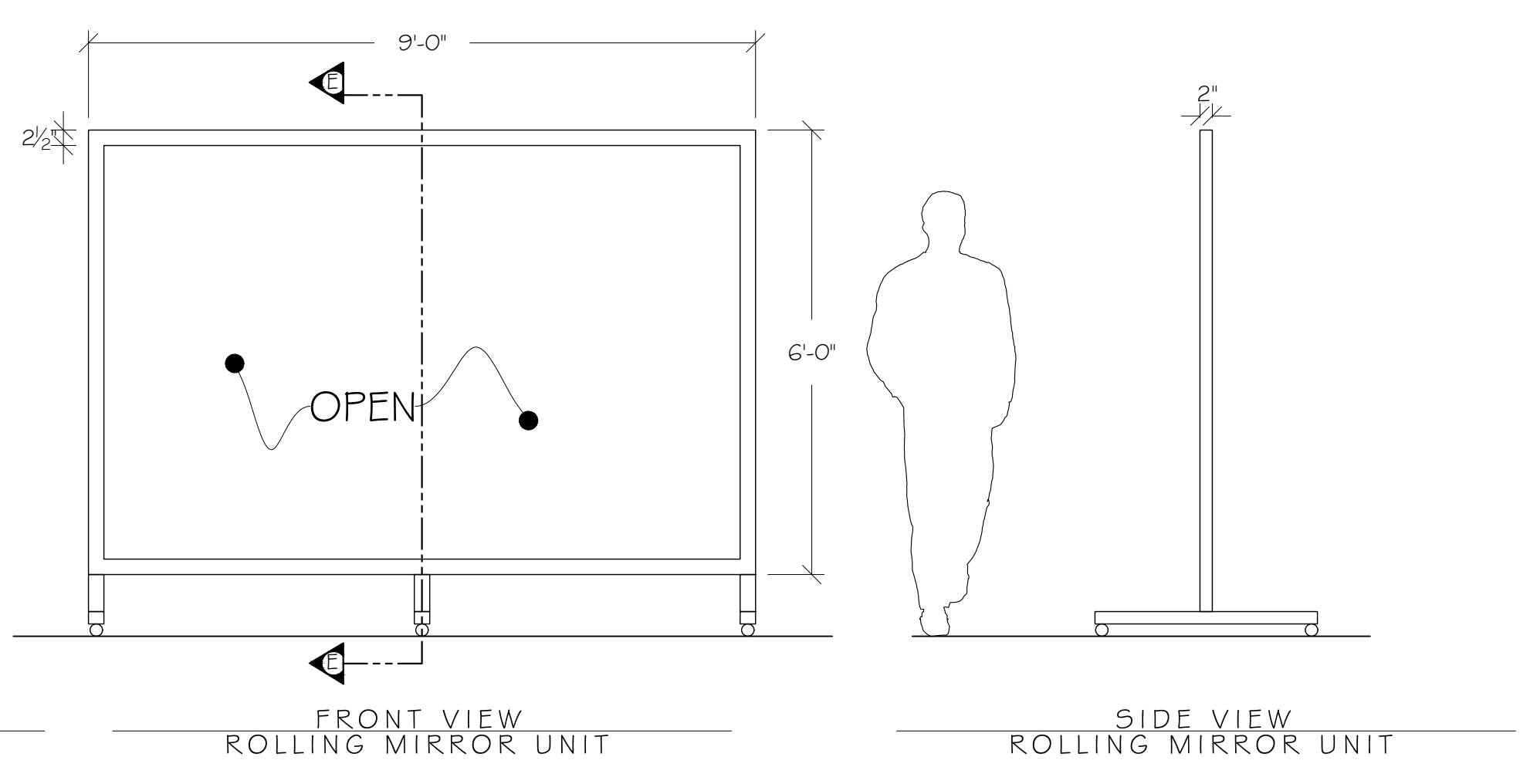
TIGER BEAT



NOTES:
 1. CURTAIN SPLITS AT CENTER.
 2. CURTAIN IS GROMMETED AND HUNG ON TRAVELER TRACK BELOW BALCONY.
 3. CURTAIN IS A MIX OF SOLIC AND SHEER FABRIC. WILL BE SPECKED BY DESIGNER.



NOTES:
 1. ON SWIVEL CASTERS.
 2. "NO ACTUAL MIRROR"; JUST FRAME



NOTES:
 1. BUILD 2.
 2. PRINTED BANNER OVER A FRAME.
 3. SPOT RIGGED; FLIES IN AND OUT.
 4. HUNG WITH AIR CRAFT CABLE.

ALL MATERIALS, CONSTRUCTION AND FINISHES MUST COMPLY WITH THE MOST STRINGENT APPLICABLE FEDERAL AND LOCAL SAFETY CODES.
 THIS DRAWING AND ALL THE IDEAS, ARRANGEMENTS, DESIGNS AND PLANS CONTAINED HEREIN OR REPRESENTED THEREBY ARE OWNED AND REMAIN THE PROPERTY OF THE DESIGNER, AND HAVE BEEN CREATED AND DEVELOPED FOR USE ON, AND IN CONNECTION WITH, THE PROJECT SPECIFIED. NEITHER THIS DRAWING NOR ANY OF SUCH IDEAS, ARRANGEMENTS, DESIGNS OR PLANS SHALL BE APPROPRIATED BY OR DISCLOSED TO ANY PERSON, FIRM OR CORPORATION FOR ANY USE WHATSOEVER, EXCEPT BY SPECIFIC AND WRITTEN PERMISSION OF THE DESIGNER.
 WRITTEN DIMENSIONS ON DRAWINGS SHALL HAVE AUTHORITY OVER SCALED CONSTRUCTION AND MANUFACTURERS SHALL VERIFY AND BE RESPONSIBLE FOR ALL DIMENSIONS AND CONDITIONS ON THE JOB, AND SHALL INFORM THE DESIGNER OF ALL VARIATIONS FROM DRAWINGS PRIOR TO PERFORMING THE WORK. THE DESIGNER SHALL FIRST SEE AND APPROVE CONTRACTOR'S FULL-SIZE DETAILS BEFORE ANY FABRICATION IS BEGUN.
 THESE DRAWINGS REPRESENT VISUAL CONCEPTS AND CONSTRUCTION SUGGESTIONS ONLY. THE DESIGNER AND HIS/HER EMPLOYEES AND ASSISTANTS ARE NOT QUALIFIED TO DETERMINE THE STRUCTURAL APPROPRIATENESS OF THESE SUGGESTIONS AND WILL NOT ASSUME RESPONSIBILITY FOR IMPROPER ENGINEERING, CONSTRUCTION AND/OR HANDLING OF THE SCENERY REPRESENTED HEREIN.

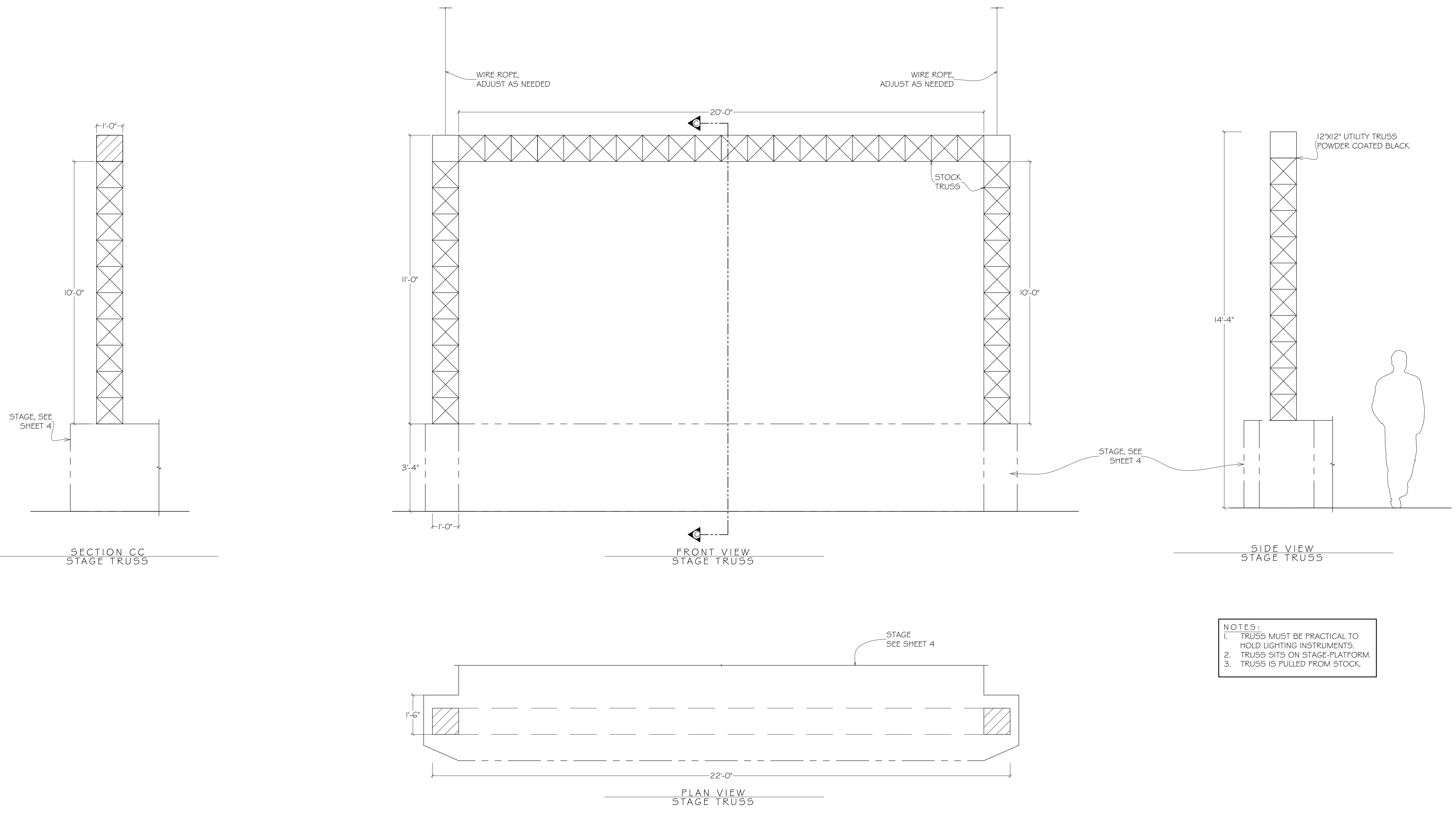
SCALE: 1/2" = 1'-0"
 DRWG: RACHEL ROSE BURKE
 DATE: 12/20/19
 REVISION(S):

DRAWING TITLE
 MIRROR UNIT, BANNERS & CURTAIN

SHEET NO.

TIGER BEAT

I. USE TRUSS FROM STOCK.



- NOTES:
1. TRUSS MUST BE PRACTICAL TO HOLD LIGHTING INSTRUMENTS.
 2. TRUSS SITS ON STAGE-PLATFORM.
 3. TRUSS IS PULLED FROM STOCK.

ALL MATERIALS, CONSTRUCTION AND FINISHES MUST COMPLY WITH THE MOST STRINGENT APPLICABLE FEDERAL AND LOCAL SAFETY CODES.
THIS DRAWING AND ALL THE IDEAS, ARRANGEMENTS, DESIGNS AND PLANS CONTAINED HEREIN OR REPRESENTED THEREBY ARE OWNED AND REMAIN THE PROPERTY OF THE DESIGNER, AND HAVE BEEN CREATED AND DEVELOPED FOR USE ON, AND IN CONNECTION WITH, THE PROJECT SPECIFIED. NEITHER THIS DRAWING NOR ANY OF SUCH IDEAS, ARRANGEMENTS, DESIGNS OR PLANS SHALL BE APPROPRIATED BY OR DISCLOSED TO ANY PERSON, FIRM OR CORPORATION FOR ANY USE WHATSOEVER, EXCEPT BY SPECIFIC AND WRITTEN PERMISSION OF THE DESIGNER.
WRITTEN DIMENSIONS ON DRAWINGS SHALL HAVE AUTHORITY OVER SCALED DIMENSIONS. CONTRACTORS AND MANUFACTURERS SHALL VERIFY AND BE RESPONSIBLE FOR ALL DIMENSIONS AND CONDITIONS ON THE JOB, AND SHALL INFORM THE DESIGNER OF ALL VARIATIONS FROM DRAWINGS PRIOR TO PERFORMING THE WORK. THE DESIGNER SHALL FIRST SEE AND APPROVE CONTRACTOR'S FULL-SIZE DETAILS BEFORE ANY FABRICATION IS BEGUN.
THESE DRAWINGS REPRESENT VISUAL CONCEPTS AND CONSTRUCTION SUGGESTIONS ONLY. THE DESIGNER AND HIS/HER EMPLOYEES AND ASSISTANTS ARE NOT QUALIFIED TO DETERMINE THE STRUCTURAL APPROPRIATENESS OF THESE DECISIONS, AND WILL NOT ASSUME RESPONSIBILITY FOR IMPROPER ENGINEERING, CONSTRUCTION AND/OR HANDLING OF THE SCENERY REPRESENTED HEREIN.

SCALE: 1/2" = 1'-0"
 DRWG: RACHEL ROSE BURKE
 DATE: 12/20/19
 REVISION(S):

DRAWING TITLE
TRUSS

SHEET NO.
8